

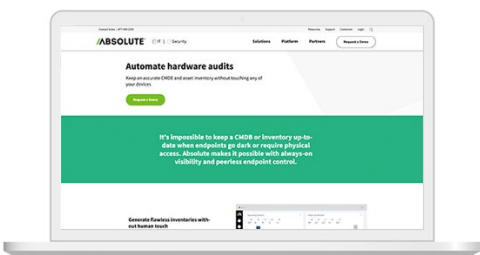
ABSOLUTE FOR IT ASSET MANAGEMENT

A COMPLEMENTARY SOLUTION TO TRACK AND MANAGE ALL OF YOUR DEVICES, DATA, AND APPS



Absolute makes managing endpoints much safer and easier. We know immediately if a laptop begins to drift off our radar. If a device is lost or stolen, Absolute is a lifeline.

**BRAD MYRVOLD,
MANAGER DESKTOP TECHNOLOGY,
ALLINA HEALTH**



Learn more about how to automate hardware audits with Absolute:
absolute.com/automate-hardware-audits

PROVE COMPLIANCE, REDUCE ASSET LOSSES, AND DRIVE EFFICIENCY

Digital changes in today's IT environment have many asset managers swimming against the current – fluid, invisible, and easily stolen devices are shifting at every moment. Meanwhile, their organizations are moving at warp speed; implementing new technologies and workplace dynamics to become boundless enterprises.

Asset managers must level-up their ITAM capabilities to support every strategic decision. To provide active insight across their endpoints, asset managers demand sub-second analysis and asset intelligence made possible by an unbreakable connection to every device, at all times – even when off the corporate network.

Common IT Asset Managers' Security Challenges:

- Lack of visibility of endpoints off the corporate network
- Not able to prevent and remediate device drift, loss, theft
- Lack of ROI on endpoint spend through resource inefficiencies
- Unidentifiable risk due to lack of visibility into impaired endpoints
- Inability to prove endpoints meet regulatory standards for compliance

SOLUTION:

TRANSFORM ITAM INTO THE CENTRAL INTELLIGENCE HUB

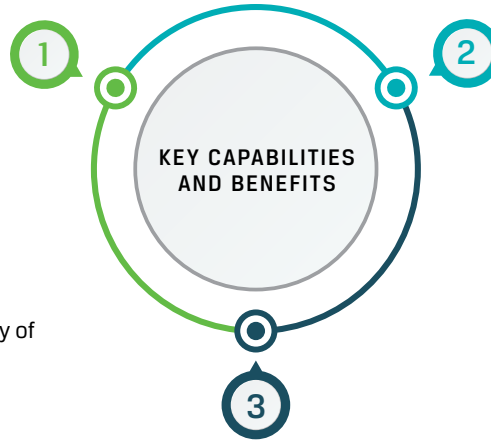
Absolute enables asset managers to see and control all of their devices and apps in a single pane of glass with Persistence® technology. This unique digital tether complements endpoint management solutions for better management of devices, data, and apps. It provides a constant grip on every device with instant line-of-sight that is never broken.

With a permanent connection to devices, critical asset intelligence can be pulled from any endpoint or group of endpoints – benchmarking, analysis, and compliance audits become continuous. When risks and exposures are identified, respond immediately with pre-built or custom commands. Bring broken or disabled controls back to life and persist apps and agents with zero human touch.

Device Inventory and Analysis

See, discover, know

- In-depth device metrics and attributes
- Unique identifiers
- Device, domain, user names
- Manufacturer data: make, model, serial numbers
- Warranty and designated contracts
- Communications log history
- Any custom device field
- Lease management – increase efficiency of refresh cycle
- Peripheral inventory discovery
- Data export into a CMDB



Endpoint Data Discovery

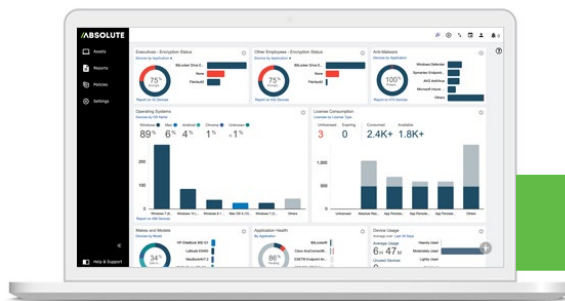
Pinpoint sensitive data in seconds

- Maintain data accountability & compliance
- Identify insecure PHI, PFI, IP & more residing on endpoints
- Remote delete specific files or perform a secure data wipe – even when off-network
- Prove data compliance with 365 days of historical data
- Persist data protection apps such as encryption or VPN

Absolute Reach

Take control of your device fleet

- Universal asset management commands
- Persistence technology, always connected
- Guaranteed command delivery & compliance validation – on/off network
- No additional infrastructure required
- Query a single device or thousands for a specific attribute not available in other tools
- Automated workflows and full customization of any PowerShell or BASH script



REQUEST A DEMO

Find out how our solutions can benefit your organization.

[REQUEST DEMO](#)

ABOUT ABSOLUTE

Absolute empowers more than 12,000 customers worldwide to protect devices, data, applications and users against theft or attack – both on and off the corporate network. With the industry's only tamper-proof endpoint visibility and control solution, Absolute allows IT to enforce asset management, endpoint security, and data compliance for today's remote digital workforces. Patented Absolute Persistence is embedded in the firmware of Dell, HP, Lenovo, and other manufacturers' devices for vendor-agnostic coverage, tamper-proof resilience, and ease of deployment. See how it works at absolute.com and follow us at [@absolutecorp](https://twitter.com/absolutecorp).



EMAIL:
sales@absolute.com



SALES:
absolute.com/request-a-demo



PHONE:
North America: 1-877-660-2289
EMEA: +44-118-902-2000



WEBSITE:
absolute.com