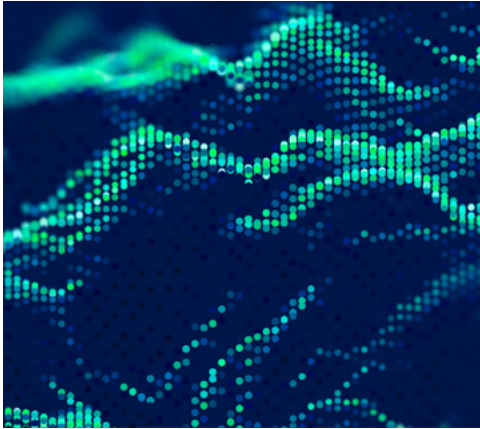


Absolute Manage

Managed Endpoint Security and Asset Intelligence Services



CUSTOMIZED FOR YOUR BUSINESS OBJECTIVES AND ENVIRONMENT

- Maintenance and delivery of reports and alerts
- Improved incident management and response
- Policies configured and defined using proven methods
- Protect sensitive data from malicious or negligent behavior
- Maintain and prove regulatory compliance
- Protect against loss or theft
- Centralize console management

THE SOLUTION TO YOUR ENDPOINT SECURITY CHALLENGES

Securing your organization and managing your assets has never been more critical. Yet protecting sensitive data, tackling complexity, and ensuring compliance can seem insurmountable for teams faced with ever-present resource and budget constraints.

Absolute Manage gives you the ability to tackle these challenges heads-on. Extending your team with the expertise of an Absolute endpoint security analyst, you'll receive ongoing maintenance, monitoring, updates, and expert analysis of the Absolute console and the intelligence it provides.

RELY ON ABSOLUTE TO POSITION YOUR TEAM FOR SUCCESS

Empower your team with continuous visibility and insights to prevent vulnerabilities and compromises. Absolute Manage ensures that your key asset management and endpoint security attributes remain within sight at all times, so your IT and security teams can confidently focus on achieving your business outcomes.

Working in lockstep with your team, your dedicated analyst will build and monitor reports according to your unique business requirements in order to:

CONFIDENTLY MANAGE HARDWARE AND SOFTWARE ASSETS

Be confident that your assets are effectively managed with customized, automated alerts on hundreds of hardware and software attributes. Track connection history, monitor the status of offline and missing devices, and device location. Arm your team with audit-ready reporting, inventory reports, and alerts of unauthorized configurations.

MONITOR SECURITY POSTURE AND APPLICATION HEALTH

Know that your critical security controls are installed, healthy, and working as intended. Monitor applications including encryption, anti-malware, antivirus, data protection and many more, and take immediate action should they become disabled or damaged.

SECURE SENSITIVE DATA AND PROVE COMPLIANCE

Be aware when endpoints contain sensitive data such as financial information, social security numbers, PHI, and intellectual property. Be notified of suspicious or insecure devices, even off-network. Stay audit-ready, always with proof that your data and devices are managed in compliance with HIPAA, HITECH, CCPA, GDPR, NIST, and other internal and regulatory requirements.

LEVERAGE USAGE METRICS TO OPTIMIZE SPEND AND REDUCE RISK

Detailed usage analytics shine a light on how frequently users are using web tools, and which web content they are accessing. Be alerted of inappropriate or insecure content in order to investigate incidents or adjust web filters. Uncover emerging end-user requirements and trends with reports on underutilized devices and applications.

REDUCE THE RISK OF LOST OR STOLEN DEVICES

Set geolocation boundaries and know that devices are locked down if policies are violated. Ensure that endpoints are always tracked and freeze or wipe sensitive data automatically or on-demand.

MANAGE REMOTE DEVICES AT SCALE

Partner with your Absolute analyst to address dark endpoints, ransomware attacks, and other vulnerabilities with customized, pre-built workflows and incident response support as required.

QUARTERLY REVIEW

In addition to monitoring and reports, you'll benefit from personalized quarterly business reviews, highlighting key recommendations and challenges. Your dedicated analyst functions as an extension of your IT and security teams, helping you continuously improve your security posture.

DEFEND ENDPOINTS AGAINST INCREASINGLY SOPHISTICATED ATTACKS

With endpoints representing the new enterprise perimeter, managing your assets and data is a critical component of every cybersecurity strategy. Protect your organization with the power of Endpoint Resilience® and depend on Absolute Manage services to guard against threats and keep your organization secure.

ABOUT ABSOLUTE

Absolute Software is the leader in Endpoint Resilience solutions and the industry's only undeletable defense platform embedded in over a half-billion devices. Enabling a permanent digital tether between the endpoint and the enterprise who distributed it, Absolute provides IT and Security organizations with complete connectivity, visibility, and control, whether a device is on or off the corporate network, and empowers them with Self-Healing Endpoint™ security to ensure mission-critical apps remain healthy and deliver intended value.



See how Absolute can transform your organization's IT and Security



EMAIL:
sales@absolute.com



SALES:
absolute.com/request-a-demo



PHONE:
North America: 1-877-660-2289
EMEA: +44-118-902-2000



WEBSITE:
absolute.com