

DATA SHEET

Absolute Edge

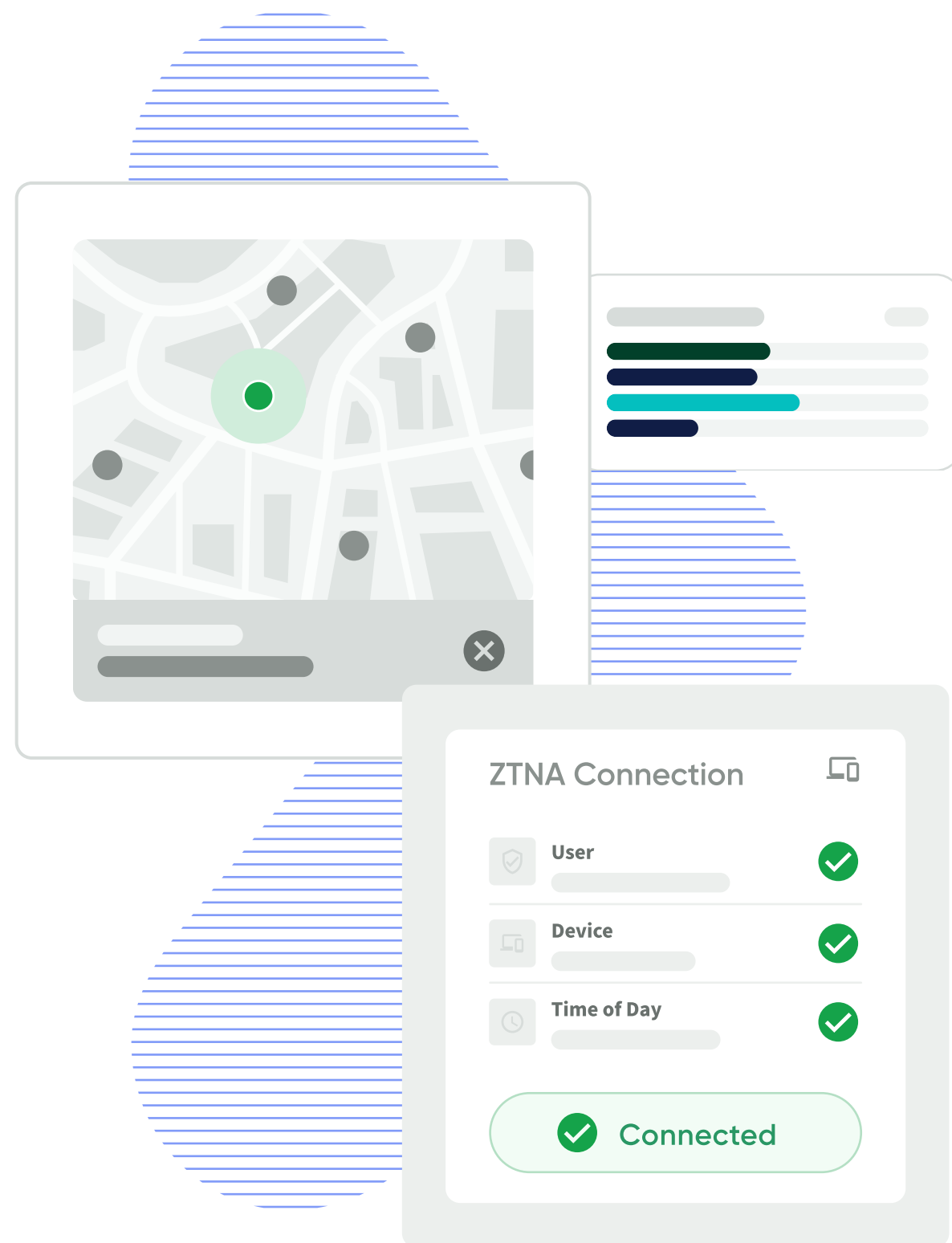
Achieve unparalleled security, visibility, and control

absolute.com



Trust is a precious commodity, especially in today's perimeter-less environment. Security practitioners know they can no longer assume implicit trust for applications, users, devices, services, and networks. Modern enterprises need a different approach, one that augments conventional network access security concepts like Virtual Private Networks (VPNs) with Security Service Edge (SSE) solutions.

ABSOLUTE[®]



The growth of the remote workforce has only made adopting a Zero Trust strategy more vital as more users connect to critical applications worldwide. It has also underscored the importance of visibility and control. Mobile-related issues and a lack of visibility into their root causes—especially outside the office’s four walls—can create massive inefficiencies for the IT arm of the business. Remote working means connecting to and roaming between networks of various quality (Wi-Fi, satellite, cellular), potentially resulting in degraded performance and employee experience. Ultimately, end users want their technology to work, regardless of what happens in the backend.

This means IT needs a higher level of visibility when it comes to today’s anywhere workforce.

Setting the Standard for Modern Secure Access

That’s where Absolute Edge™ helps, as it combines all capabilities of Absolute Core™ (i.e., Network Resilience™ and a mobile-first enterprise VPN) with a software-defined perimeter via Zero Trust Network Access (Absolute ZTNA) and a digital experience monitoring tool (Absolute Insights™ for Network).

The latter provides real-time data about the device, applications, and network performance in a single pane of glass – giving IT easy-to-read snapshots of the organization’s device fleet. Absolute Insights for Network is crucial for field workers (e.g., in public safety, transportation, and utilities), as real-time data into any network outages and application crashes become detrimental in emergency situations. With those insights, Absolute’s powerful context-aware policy engine gives you the ability to apply policies that can optimize connectivity, prioritize mission-critical applications, block risky content, and protect company resources in unsafe network conditions, right down to the endpoint device. With the visibility and policy engine working hand-in-hand, downtime and barriers to productivity are alleviated and your employees can get back to business.

Absolute Edge allows for rapid or gradual ZTNA adoption and at the same time enables you to consolidate your vendor portfolio.

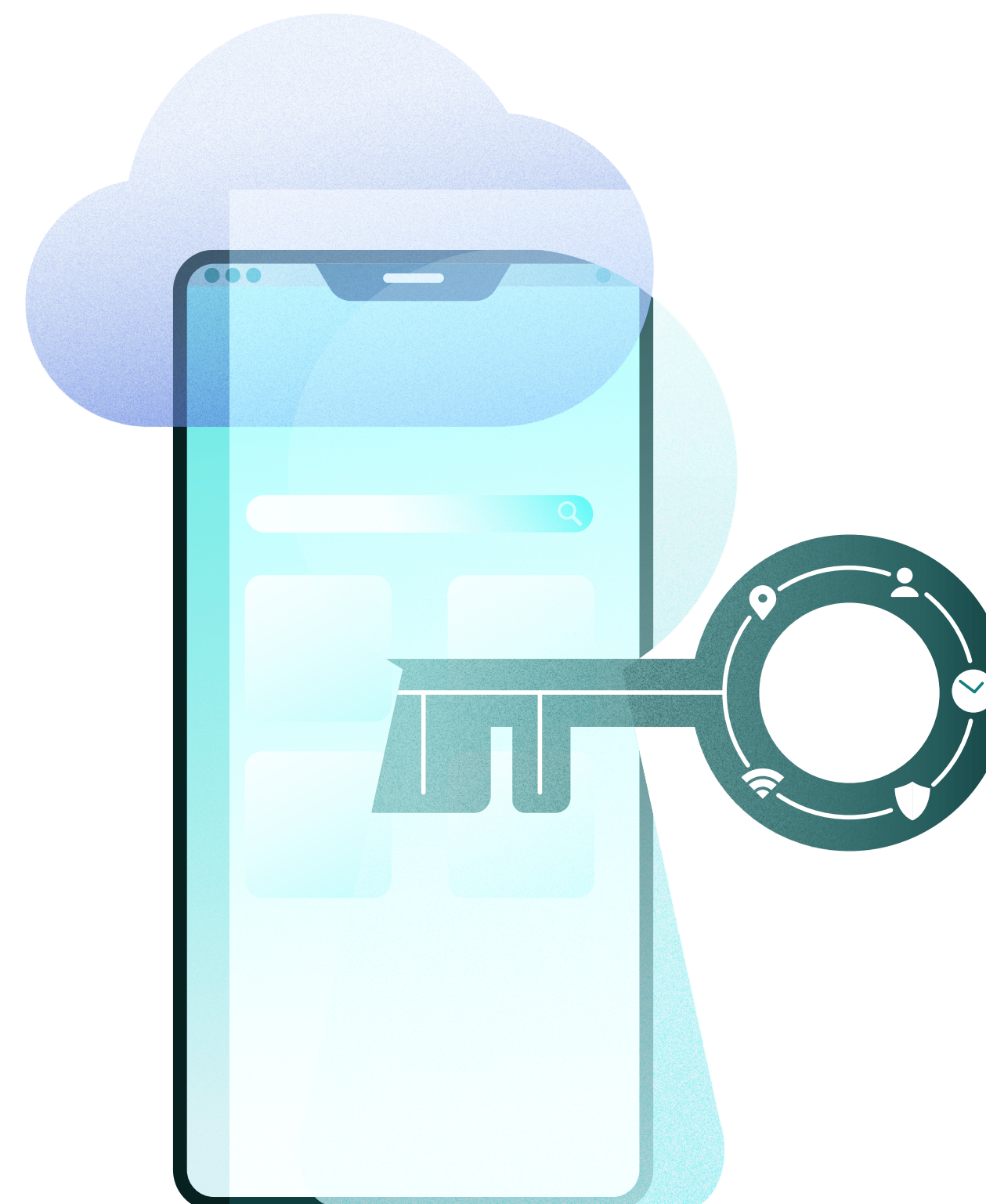
As delivering a secure browsing experience is vital in today’s dynamic threat landscape, Absolute offers the Absolute Secure Web Gateway Service (powered by Ericom) add-on module. It tightly integrates with the extensive policy capability in Absolute Secure Access, strengthening an organization’s security posture while improving end user experience.

Absolute Edge in combination with Absolute Secure Web Gateway Service delivers the industry’s first mobile SSE solution, extending the same level of protection normally only associated with office or hybrid workers to mobile, deskless, and field workers.

Security without Sacrificing Productivity

Absolute Edge delivers unparalleled security, visibility, and control for your secure access needs.

- ✔ **Secure Application Access** Conditional access to any online destination, with or without use of the VPN; control application access based on risk and compliance requirements; and restrict unsanctioned access to enterprise resources, no matter where they're hosted
- ✔ **Threat Detection and Prevention** Threat categorization of domains visited by remote workers and block access to risky or inappropriate content
- ✔ **Secure and Optimized Remote Access** Restrict unsanctioned access to enterprise resources, no matter where they're hosted; dynamic policy enforcement at endpoint eliminates chokepoints and improves network performance; and track effectiveness of ZTNA policy enforcement, allowing for immediate impact analysis and further fine-tuning of policies
- ✔ **Digital Experience Monitoring** Complete visibility to remote and mobile workers, with the deepest analytics available for enterprise mobility; diagnostics on device and network issues to empower helpdesk teams; and rich analytics on network performance outside the corporate perimeter, from cellular to public Wi-Fi and real-time geolocation dashboards
- ✔ **Secure Web Gateway (optional)** Defend from viruses, malware, malicious code, zero-day threats, as well as data loss or leakage. Safely inspect, scrub, and inoculate Web content in a cloud container before delivering it safely to the end user's Web browser.
- ✔ **One Platform, One Agent, One Vendor** Allows for gradual adoption of Zero Trust posture with flexibility to do it per user and per group without forklift upgrades





Choose According to Your Business Needs

Absolute Secure Access packages are offered in two flavors, Absolute Core™ and Absolute Edge™.

MOST POWERFUL

Absolute Core

Absolute VPN

Built from ground up for mobility and the modern edge

What's Included

- ✓ Actively improve the employee experience
- ✓ Always-on connectivity, using tunnel and session resilience
- ✓ Video and audio optimizations
- ✓ Secure application access via mobile-first enterprise VPN

Absolute Edge

All Core capabilities, plus

Absolute ZTNA

Best user experience for the software-defined perimeter

- ✓ Full visibility outside the corporate perimeter
- ✓ Continuous risk assessments, using multiple data points to power access policies
- ✓ Restrict access to enterprise resources, no matter where they're hosted

Absolute Insights for Network

Best diagnostics and remediation for digital experience monitoring

- ✓ Patented, proactive diagnostics on device and network
- ✓ Network performance analytics outside the corporate perimeter; from cellular to public Wi-Fi
- ✓ Real-time geolocation dashboards
- ✓ Threat categorization of domains visited by remote workers

ABSOLUTE EDGE ADD-ON

- ✓ **Absolute Secure Web Gateway Service**
Delivers a secure browsing experience for all—desk, mobile, or hybrid users.

[See Related Resources](#)





ABSOLUTE[®]

Trusted by nearly 21,000 customers, Absolute Software is the only provider of self-healing, intelligent security solutions. Embedded in more than 600 million devices, Absolute is the only platform offering a permanent digital connection that intelligently and dynamically applies visibility, control and self-healing capabilities to endpoints, applications, and network connections – helping customers to strengthen cyber resilience against the escalating threat of ransomware and malicious attacks.

[Request a Demo](#)

